

# New Elementary School



Finish Presentation

New Elementary School • FM 1764 and Avenue G 1/2 • October 16, 2017

SANTA FE INDEPENDENT SCHOOL DISTRICT



## Level 1 Floor Plan

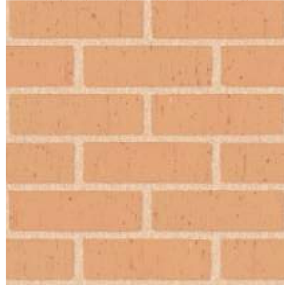
New Elementary School • FM 1764 and Avenue G 1/2 • October 16, 2017



Level 2 Floor Plan

New Elementary School • FM 1764 and Avenue G 1/2 • October 16, 2017

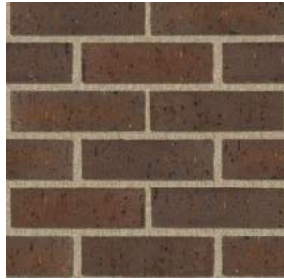




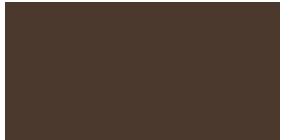
BR-1 BRICK - 510 MINGLE



BR-2 BRICK - ATHENS



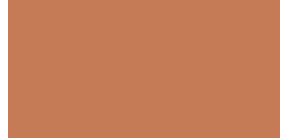
BR-3 BRICK - 500 HARVARD



MT-1/MC-1 COPPER BROWN



MR-1 CHAMPAGNE

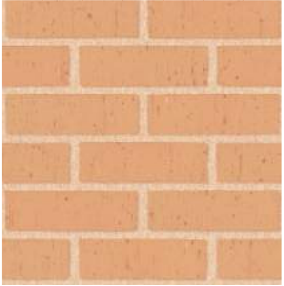


FCS-1 FIBER CEMENT SIDING  
NICHIIA COPPER WIRE

## Entry View

New Elementary School • FM 1764 and Avenue G 1/2 • October 16, 2017





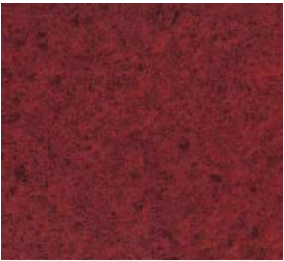
BR-1 BRICK - 510 MINGLE



SS-1 STAINLESS STEEL



F-8 GREEN AND BROWN TERRAZZO



PL-1 PLASTIC LAMINATE  
SIENNA ESSENCE



FCS-1 FIBER CEMENT SIDING  
NICHIIHA COPPER WIRE

# South Lobby

New Elementary School • FM 1764 and Avenue G 1/2 • October 16, 2017





Mainstreet Looking North

New Elementary School • FM 1764 and Avenue G 1/2 • October 16, 2017





SAWP-1 SOUND ABSORBING WALL PANEL



SAWP-2 SOUND ABSORBING WALL PANEL



WC-1A WALL COVERING



PL-1 PLASTIC LAMINATE



F-2A CARPET TILE

# Library Looking West

New Elementary School • FM 1764 and Avenue G 1/2 • October 16, 2017

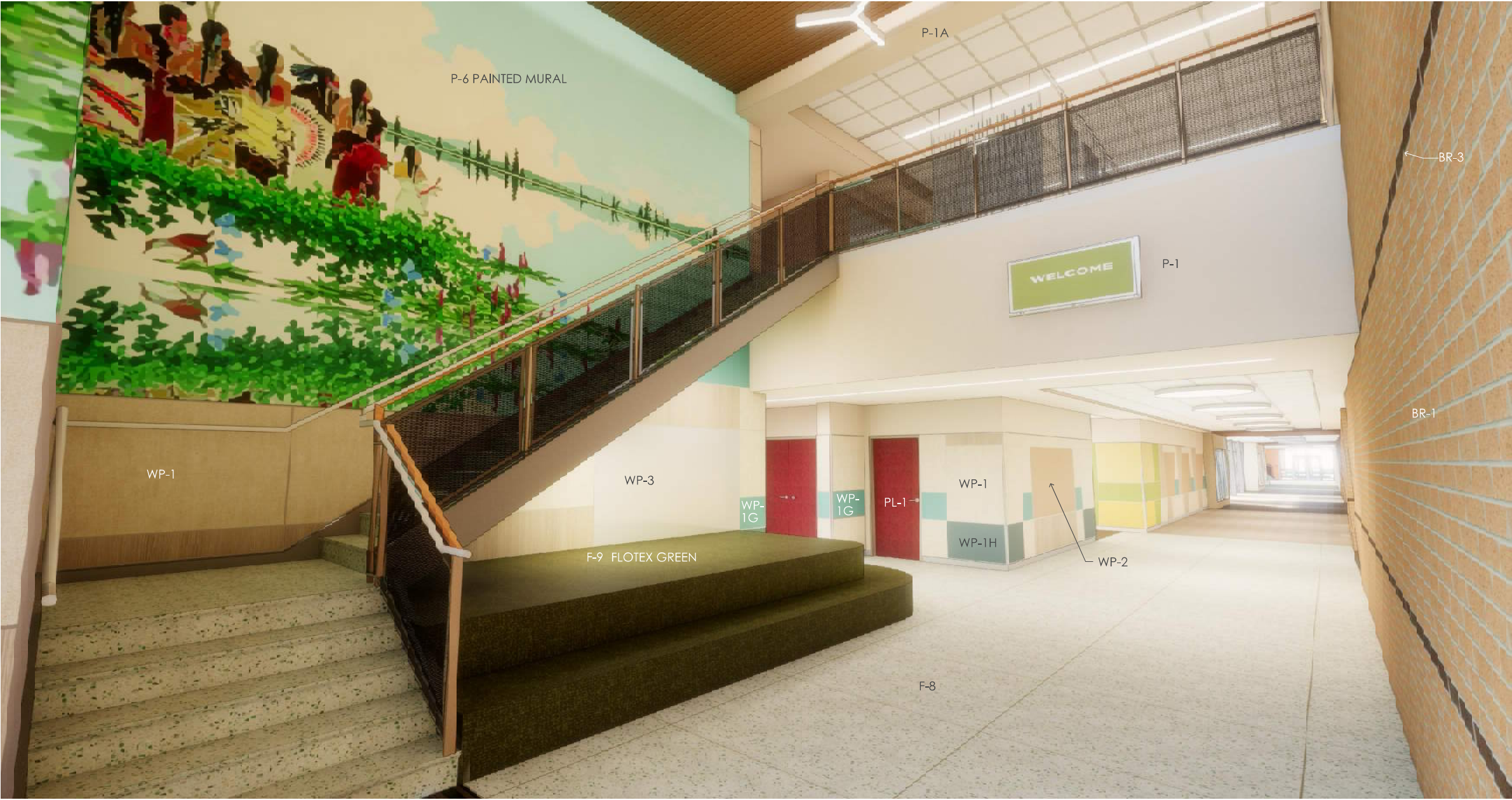




## Library Looking East

New Elementary School • FM 1764 and Avenue G 1/2 • October 16, 2017





North Lobby

New Elementary School • FM 1764 and Avenue G 1/2 • October 16, 2017

# GRADE LEVEL COLOR SCHEME

NEW ELEMENTARY SCHOOL

Santa Fe ISD



Collaboration Area

New Elementary School • FM 1764 and Avenue G 1/2 • October 16, 2017





TYPICAL GRADE LEVEL COLLABORATION  
AREA  
WITH COLOR SCHEME APPLIED

5TH GRADE  
COLLABORATION AREA  
SHOWN FOR EXAMPLE

Collaboration Area

New Elementary School • FM 1764 and Avenue G 1/2 • October 16, 2017



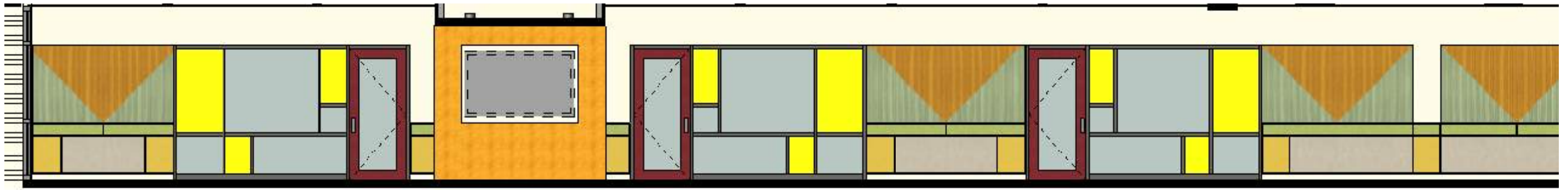


## Collaboration Area

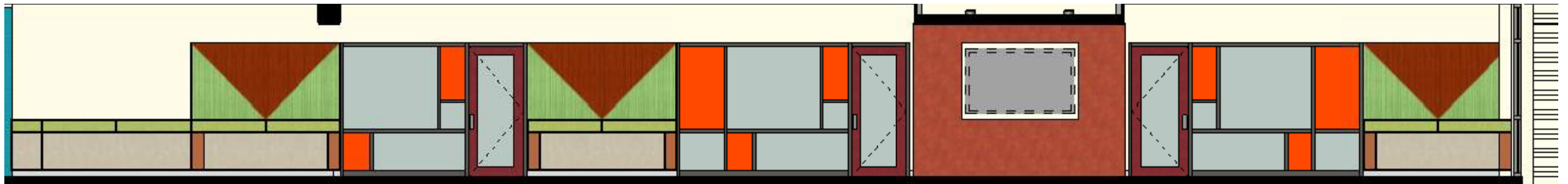
New Elementary School • FM 1764 and Avenue G 1/2 • October 16, 2017



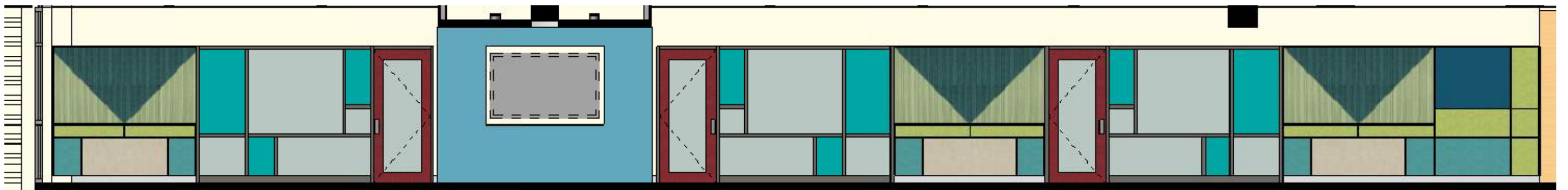
# SANTA FE INDEPENDENT SCHOOL DISTRICT



PRE-K/KINDER



1<sup>ST</sup> GRADE

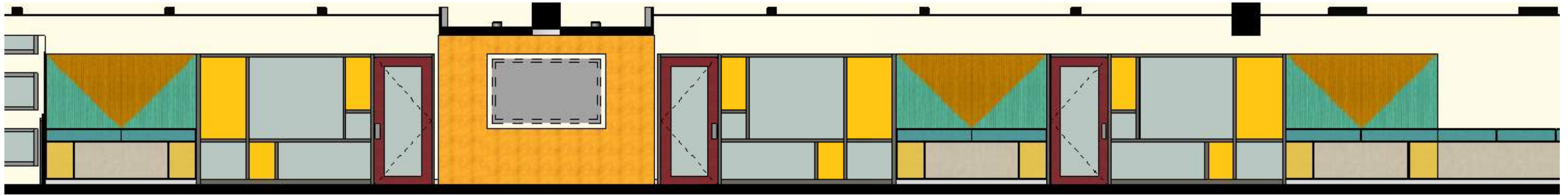


2<sup>ND</sup> GRADE

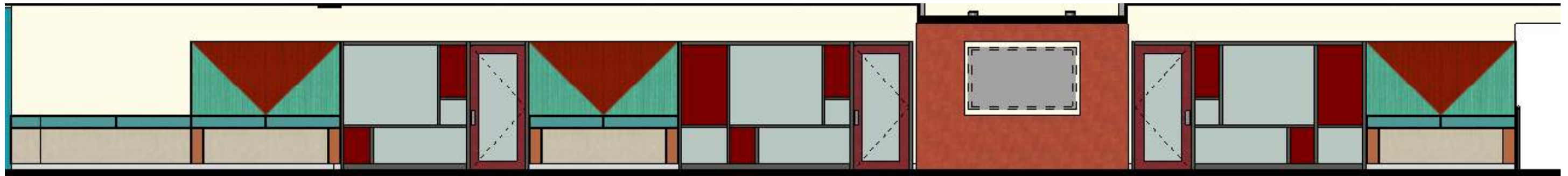
## Collaboration Area

New Elementary School • FM 1764 and Avenue G 1/2 • October 16, 2017

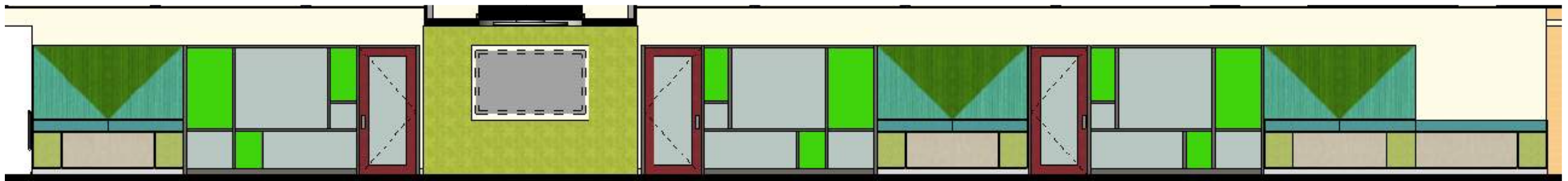
# SANTA FE INDEPENDENT SCHOOL DISTRICT



3<sup>RD</sup> GRADE



4<sup>TH</sup> GRADE



5<sup>TH</sup> GRADE

## Collaboration Area

New Elementary School • FM 1764 and Avenue G 1/2 • October 16, 2017





CT-1 CERAMIC TILE



F-4 CERAMIC TILE FLOORING



CT-1A CERAMIC TILE



CT-1B CERAMIC TILE



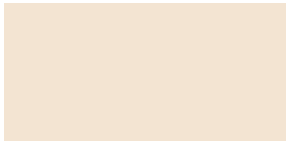
CT-1C CERAMIC TILE

# Restrooms

New Elementary School • FM 1764 and Avenue G 1/2 • October 16, 2017





|   |  |
|---|--|
|    |   |
| P-1 PAINT EGGWHITE  | F-1 MCT - SPARROW  |
|    |  |
| P-2 PAINT WHITE FLOUR   |  |
|    |   |
| P-7 PAINT   | F-1D MCT - GREEN   |
|    |  |
| P-9 PAINT   |  |
|  |  |
| P-10 PAINT  | PL-1 PLASTIC LAMINATE  |
|  |  |
| P-11 PAINT  |  |

Corridor View at Cafeteria

New Elementary School • FM 1764 and Avenue G 1/2 • October 16, 2017





|   |   |
|---|---|
|    |    |
| P-1 PAINT EGGWHITE  | F-1 MCT - SPARROW   |
|    |   |
| P-2 PAINT WHITE FLOUR   |   |
|    |    |
| P-7 PAINT   | F-1D MCT - GREEN  |
|    |   |
| P-9 PAINT   |   |
|  |   |
| P-10 PAINT  | F-6C WALK-OFF MAT TUNGSTON  |
|  |  |
| P-11 PAINT  | PL-1 PLASTIC LAMINATE   |

Collaboration Area

New Elementary School • FM 1764 and Avenue G 1/2 • October 16, 2017





|      |                   |
|------|-------------------|
|      |                   |
| P-1  | PAINT EGGWHITE    |
|      |                   |
| P-2  | PAINT WHITE FLOUR |
|      |                   |
| P-7  | PAINT             |
|      |                   |
| P-9  | PAINT             |
|      |                   |
| P-10 | PAINT             |
|      |                   |
| P-11 | PAINT             |

Collaboration Area

New Elementary School • FM 1764 and Avenue G 1/2 • October 16, 2017